



Samekana

Shriram **ONE**CITY

VALARPURAM - CHENNAI



Samekana  
Shriram **ONECITY**  
VALARPURAM - CHENNAI

*Soukiyamana* Life!



[www.Zricks.com](http://www.Zricks.com)

## Shriram Group - The Birth of Trust

- Inception in 1974
- People-first philosophy
- Mission: Empowering people through prosperity
- The relentless pursuit of the mission came to be the raison d'être and the identity of the group
- Around 80,00,000 customers
- Marketing force of 1,00,000 people
- Manpower of 55,000 people
- 2,400 branches and service centers
- Assets under management : USD 16 Billion

### The Gamut of Services

#### Financial

- Commercial Vehicle Finance
- Life Insurance
- General Insurance
- Consumer Enterprise & Finance
- Financial Product Distribution
- Retail Stock Broking
- Chit Fund
- Wealth Advisors

#### Non-financial

- Real Estate development
- Information Technology
- Engineering Services
- Auto Machine Components
- PET and Flexible Packing
- Drugs & Pharmaceuticals
- Medical Diagnostics
- Musical Instruments
- Business process management
- Infrastructure & Power

**Empowering people  
through prosperity**

## Shriram Properties

- *One of the most trusted developers in South India*
- Genesis 1995
- Inheriting the Pedigree of trust and business values
- Completed Projects : 12 million SFT of Built-up area - residential & Commercial
- Ongoing Projects : 15 million SFT of Built - up area - residential & Commercial
- Upcoming Projects : 29 million SFT of Built - up area - residential & Commercial
- Impressive footprints in Bangalore, Chennai, Coimbatore, Vishakhapatnam, Hyderabad, Delhi, & Kolkata
- Customer-centric approach

### The Vision

Be ever respected as the most trusted, honest and progressive corporate in the Real Estate Industry.

ZRICKS

**40** Shriram  
Years  
Nurturing Trust & Confidence

### Green building - Achievements & Recognition

- Shriram Gate way, Our SEZ project sprawling over 58 acres of land has got the unique distinction for Green building initiatives.
- Shriram Properties has created a record as the 1st Developer for IT Office Building in Chennai to have obtained the LEED - Platinum rating.
- In 2015, The Confederation of Indian Industry and Indian Green Building Council has certified our Shriram the Gateway LEED India for Core & Shell Platinum for having successfully achieved Green Building Standards.
- The above recognition is after a Hat-trick in LEED GOLD rating certification for the last three consecutive years.

South India's  
Best Developer  
Award for  
2013, 14 and 15  
By  
ASSOCHAM



Best Realty  
Investment Partner  
In INDIA  
Award 2014  
By  
ASSOCHAM



Most Transparent  
Developer in  
South India and  
Housing Excellence  
Award 2015  
By  
ASSOCHAM



Member:  
**CREDAI**

Self-contained Residential Enclaves | Residential Apartments | Villas & Row Houses | Integrated Townships | Hospitality | IT ZEZ | Retail and Commercial Space

BANGALORE



SHRIRAM CHIRPING WOODS



SHRIRAM WHITE HOUSE



SHRIRAM SHRISHTI



SHRIRAM SHREYAS



SHRIRAM SPURTHI



SHRIRAM SMRITHI



SHRIRAM SAMEEKSHA



SHRIRAM SIGNIA



SHRIRAM LUXOR



SHRIRAM GREENFIELD



SHRIRAM SAMRUDHI



SHRIRAM SUMMIT



SHRIRAM SAMSKRUTHI



SHRIRAM HEBBAL ONE



SHRIRAM SURABHI



SHRIRAM THE GATEWAY



SHRIRAM SHANKARI



SHRIRAM ONE CITY



SHRIRAM SHRESHTA



SHRIRAM SAI SHREYAS



SHRIRAM VIJAYA HYYDE PARK



SHRIRAM THE GRAND CITY



SHRIRAM PANORAMA HILLS



# Samekana

## Shriram **ONE**CITY

VALARPURAM - CHENNAI

### Shriram One City

- A locality strategically placed off the Chennai-Bangalore Highway, NH4, before Sriperampudur, the largest corridor of manufacturing industries in Chennai and just about 13 Km from Poonamallee.
- A huge industrial sprawl covering Sriperampudur, Irugattukottai, Mannur-Arakkonam road and SIPCOT INDUSTRIAL PARK, having more than 10 thousand acres of Industrial development - large, medium and small, triggering further real estate activity.
- Over 16 global enterprises and 24 Indian industries (other than the SMEs), contributing a vital chunk to the GDP, prosperity and buying power.
- Dot on the Mannur-Arakkonam road, in what is practically an island of lovable living atmospherics, with a scenic view of the nearby lake and noticeably secluded from the industrial mosaic
- Good connectivity from other parts of the city at macro level due to the proximity to the National Highway.
- Zero noise pollution, air pollution and traffic related problems.
- Upcoming Aerospace Project and announced developments, the Green Field Airport, Rajiv Gandhi Dry Port, have triggered further real estate activity.
- A large social infrastructure comprising schools, colleges, hospitals and hotels.

MAKE LIFE WHERE LIFE MAKES YOU



Samekana  
Shriram **ONE**CITY  
VALARPURAM - CHENNAI







## Shriram Samekena

- 2 and 3 BHK apartments in fair terms .
- The one opportunity to own your home in the exuberance of healthy environs.
- Well -connected to one of Chennai's largest industrial suburbs.
- Large social infrastructure of schools, colleges and hospitals
- A fast-growing suburb assuring fast-growing investment





## Amenities

- Club House
- Gym
- Swimming Pool
- Table Tennis Court
- Badminton Court
- Basketball Post
- Children's Play Area
- Senior Citizen Area
- STP
- WTP
- R.O.Plant
- D.G Backup for Common Area Lighting
- Rainwater Harvesting
- Driver's Restroom
- Exclusive Car Wash Point

- Jogging & Walking Track
- 24/7 Security
- Basic D G Backup for All Apartments
- Mini Departmental Store
- ATM
- Pharmacy
- Doctor's Consultancy Facility
- Zodiac Garden (Nakshatravanam)
- Indoor Games
- Yoga Corner
- Meditation Center
- Herbal Garden
- Butterfly Garden
- Health Club
- Solar Power for Outdoor Lighting

- Solar Power — Heated Water for Master Bed Bathroom
- Multipurpose Community Hall
- Pantry
- Library & Reading Room
- Snookers & Billiards
- Parlour
- Creche
- Skating Rink
- Amphitheatre
- Party Lawn
- Reflexology Path Way
- Kids Park
- Toddlers Zone



## Rajiv Gandhi Dry Port

- The 39km stretch between Thandalam and Arukilpadi on the state highway has been widened to 4 lane to facilitate movement of trucks from Rajiv Gandhi Dry Port to National Highway-4 and there by to Chennai, Bangalore and Mumbai
- This stretch too has a large number of industries



## Other tourist attractions

The other tourist attractions in and around Sriperumbudur is as follows:

- Birthplace of Saint Ramanuja
- Vallakottai Murugan Temple
- Madras Motor Sports Club
- Rajiv Gandhi Memorial
- Queens land Theme Park
- Dash & Splash Water Park



ZRICKS .COM



## Social Infrastructure (To name a few)

### Foreign Industries

- HYUNDAI MOTOR INDIA LIMITED, KOREA
- OERLIKON BALZERS INDIA PVT LTD, SWITZERLAND
- BOC INDIA LIMITED(LINDE INDIA), GERMANY,
- GRUPO ANTOLIN PUNE P.LIMITED, SPAIN,
- HOSPIRA HEALTH CARE, USA,
- S.L. LUMAX LIMITED, KOREAN,
- SAINT GOBAIN GLASS INDIA LTD., FRANCE,
- CAPARO ENGG P.LTD., U.K,
- DELL INDIA P LTD., U.S.,
- FLEXTRONICS TECHNOLOGIES, U.S,
- SAMSUNG INDIA, KOREA
- CATERPILLAR INC, U.S.,

### Other prominent Industries

- DHL LOGISTICS
- MYOUNG SHIN
- DAEJOO
- DYMOS
- CHOWEL
- DELFHI TVS

### Indian-owned Industries

- SCHWING STETTER IND.P. LIMITED,
- ASAHI INDIA GLASS LIMITED,
- POS HYUNDAI STEEL MFG.,
- BAILEY HYDRO POWER P. LIMITED,
- ADDISON & CO,
- TATA BLUE SCOPE STEEL BUILDING SOLUTIONS,
- ESAB INDIA LIMITED
- INTERNATIONAL RUBBER TECH P.LTD,
- OHM ENERGY MANAGEMENT,
- PRECISION EQUIPMENTS (CHENNAI) P.LIMITED,
- PRECISION MACHINE TOOL SERVICES,
- REYNOLDS PEN(I) P. LIMITED,
- WIPRO FLUID POWER,
- INDEX AUTO COMPONENTS,
- KEENWIN APPARELS,
- SPERRY PLAST LTD, TAPP
- SEMICONDUCTORS INDIA P LTD

- ASIAN PAINTS LTD.,
- CRAFTSMAN AUTOMATION,
- DIETECH INDIA,
- ESPIEM PLASTICSS,
- ESPIEM PLASTICSS,
- FENNER (INDIA) LTD.,
- GATES UNITTA INDIA CO P LTD,
- HINDUJA FOUNDRIES LTD.,
- K.C.C. PAINT(INDIA) P LTD,
- MAINETTI(INDIA) P.LTD.,
- METECNO (INDIA) P.LTD.,
- MODINE THERMAL SYSTEMS
- PRAXAIR INDIA P.LTD.,

## Social Infrastructure (To name a few)

### Colleges

- JEPPIAR INSTITUTE OF TECHNOLOGY
- RRASE COLLEGE OF ENGINEERING
- MAAMALLAN INSTITUTE OF TECHNOLOGY
- S.M. KADER ENGINEERING COLLEGE
- SAVEETHA ENGINEERING COLLEGE
- RAJALAKSHMI ENGG COLLEGE
- SHAKTHY MARIAMMAN ENGG COLLEGE
- KINGS INSTITUTE
- RAJIV GANDHI COLLEGE
- VENKATESWARA ENGG COLLEGE
- SASTHA ENGG COLLEGE
- DMI ENGG COLLEG
- KALSAR ENGG COLLEGE
- PANIMALAR ENGG COLLEGE
- RAJALAKSHMI INSTITUTE

### Schools in Valarpuram

- ST. ANNE'S HIGHER SECONDARY SCHOOL
- MAHARISHI VIDYA MANDIR
- ST. JOHN'S INTERNATIONAL SCHOOL
- ST. JOSEPH INTERNATIONAL SCHOOL

### Hospitals

- SAVEETHA MEDICAL COLLEGE
- JAYA HOSPITAL
- PANDIAN HOSPITAL
- DEVI HOSPITAL

### Transport facilities

- Site is located in close proximity to the several manufacturing Industries and Educational Institutes.
- Off City's Industrial Growth Corridor - NH4 (Chennai Bangalore Highway)
- Large shape of Land permissible for Multipurpose usage



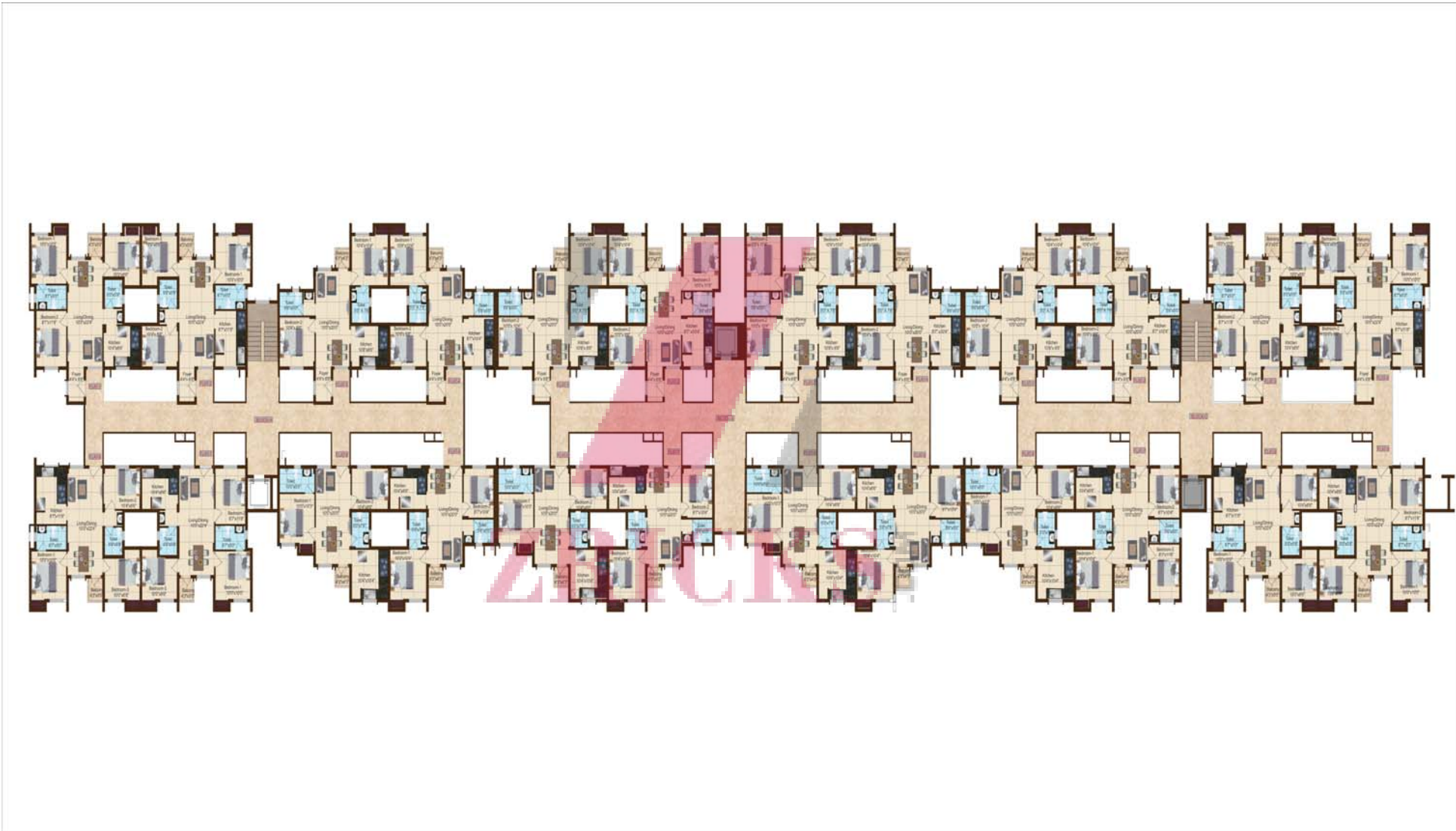
The project approved by:



Samekana - Master Plan



# Tower-1 Floor Plan



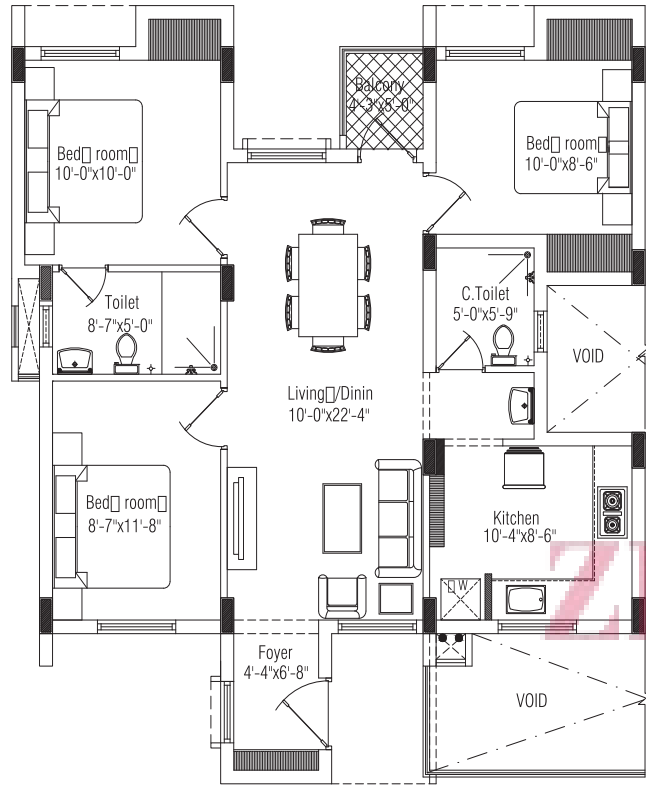


# Tower-2 Floor Plan

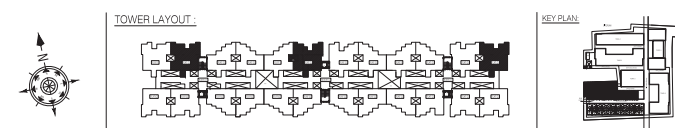
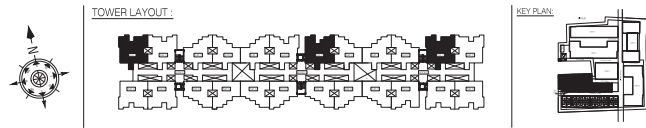
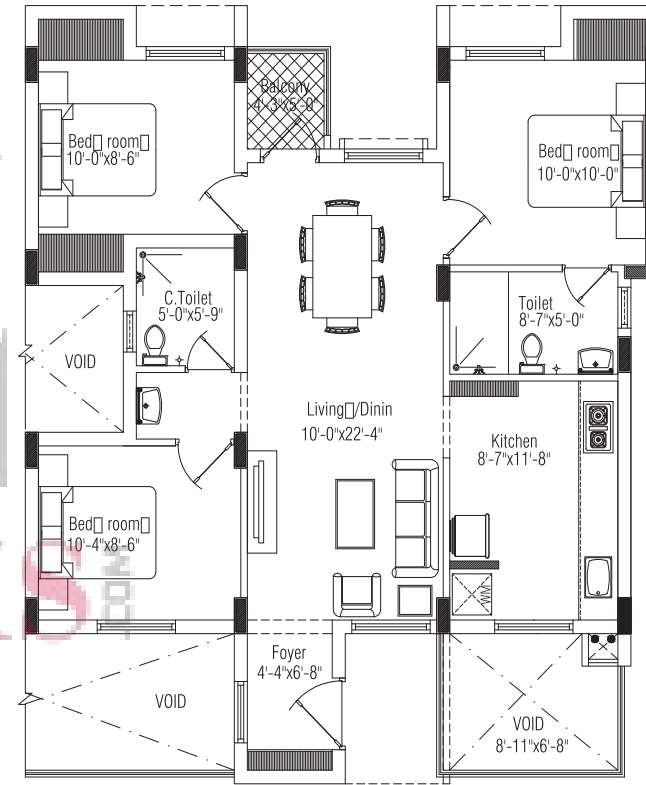


ZRICKS.COM

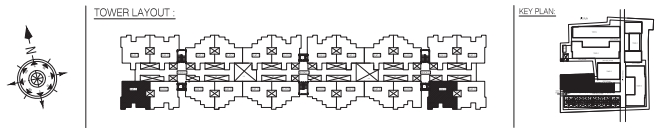
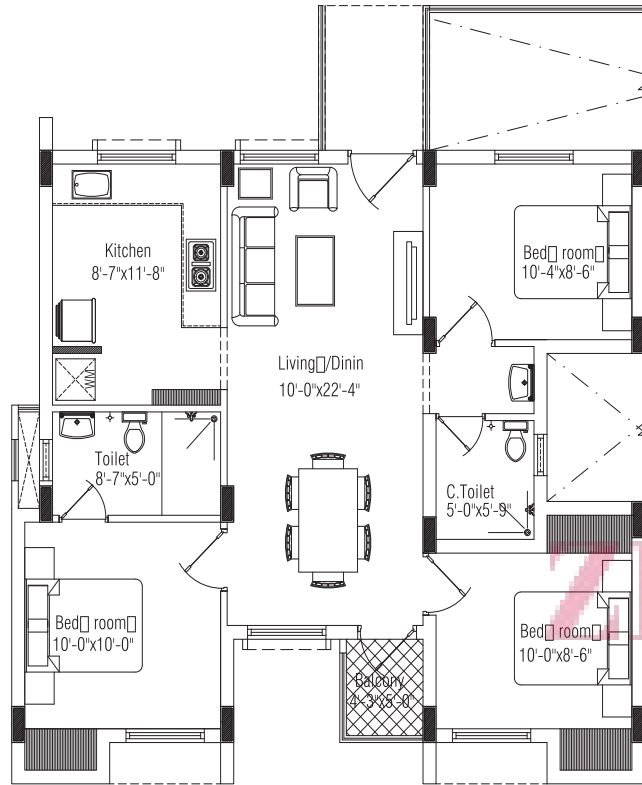
### 3 BHK FLAT (TYPE-1)



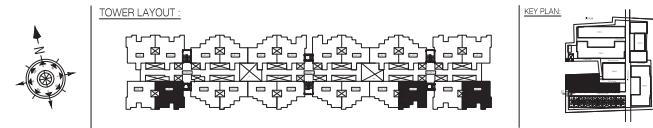
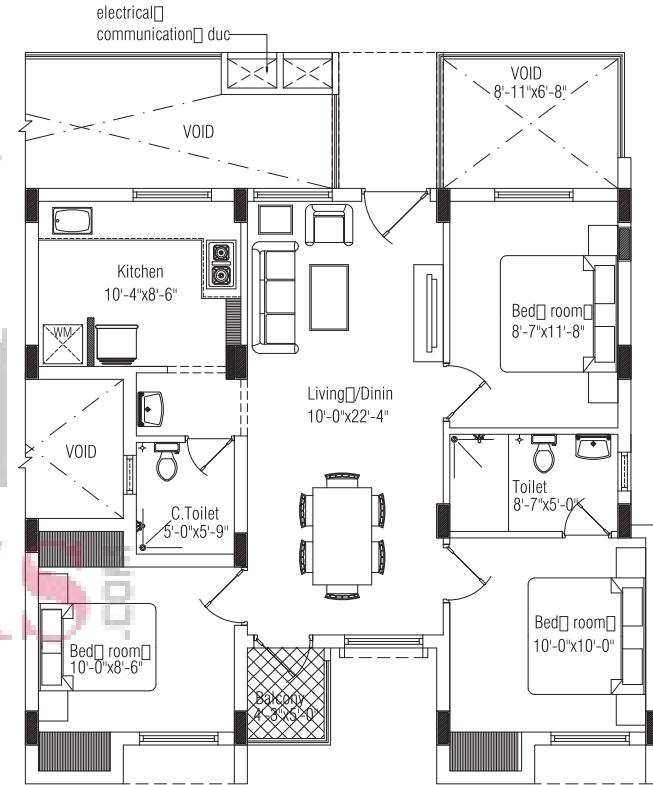
### 3 BHK FLAT (TYPE-2)



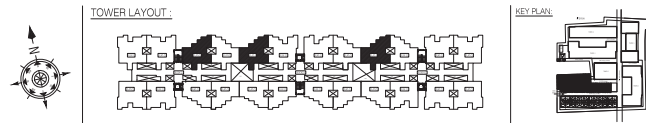
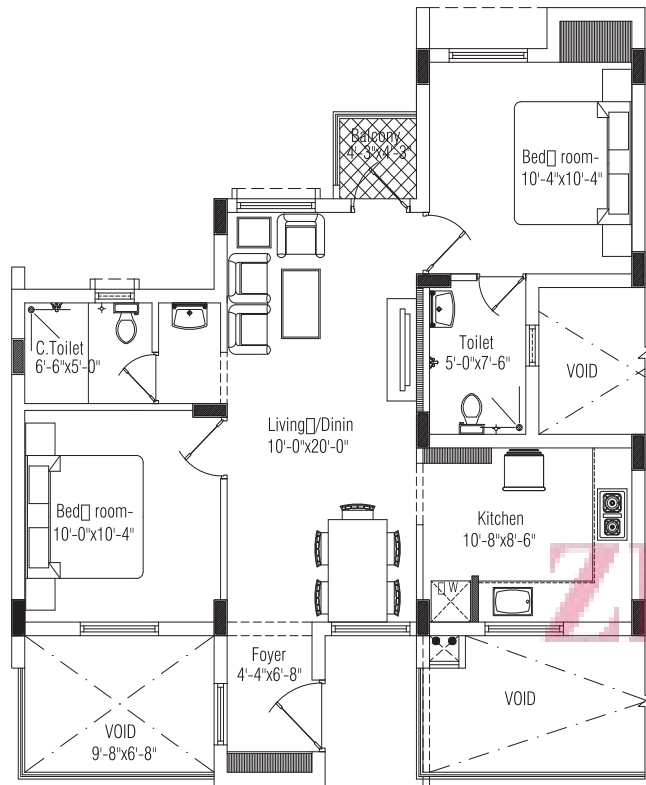
### 3 BHK FLAT (TYPE-1)



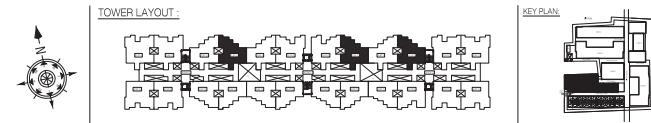
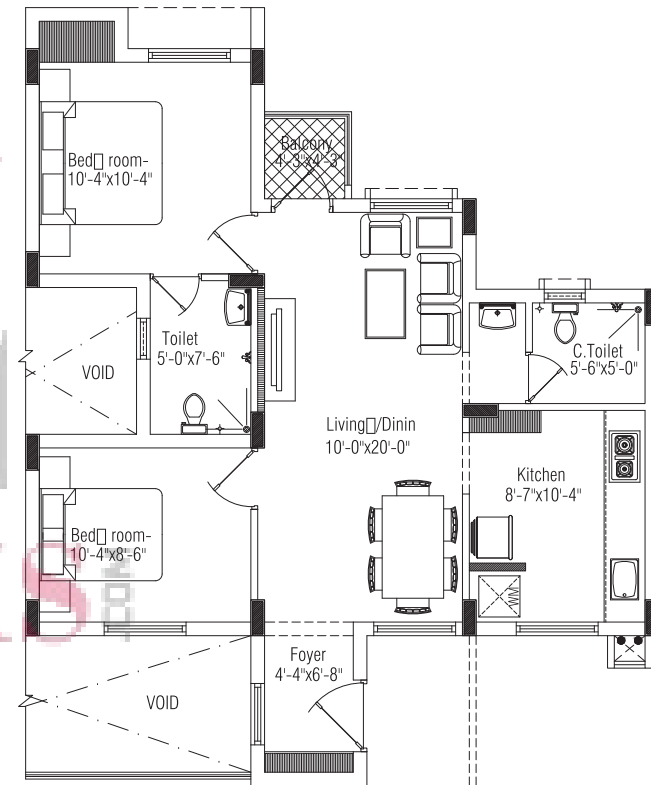
### 3 BHK FLAT (TYPE-2)



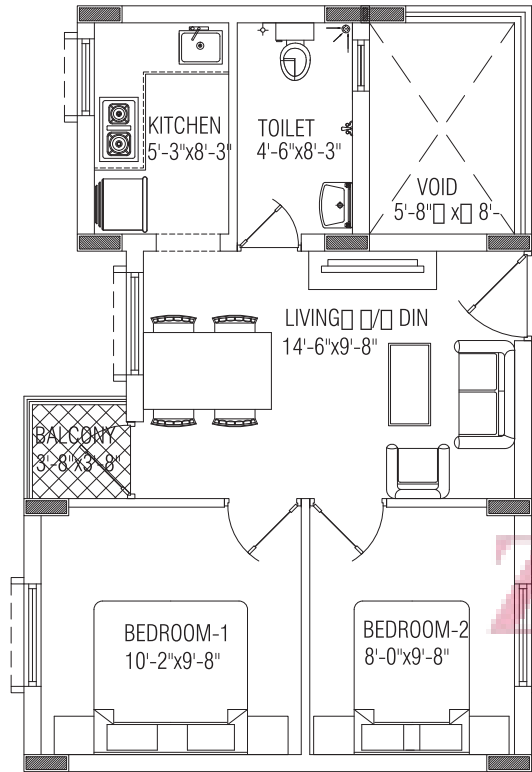
## 2 BHK FLAT (TYPE-1)



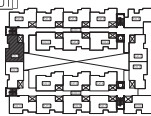
## 2 BHK FLAT (TYPE-2)



## 2 BHK FLAT (TYPE-2)



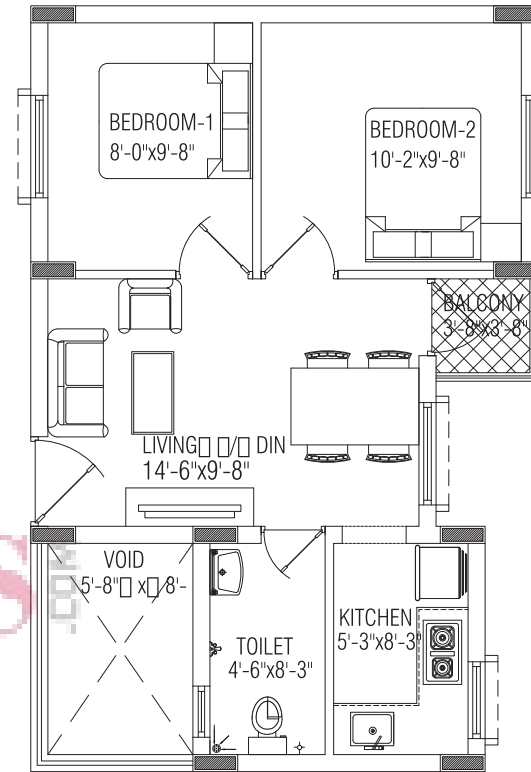
TOWER LAYOUT



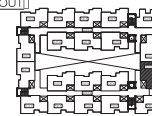
KEY PLAN



## 2 BHK FLAT (TYPE-1)



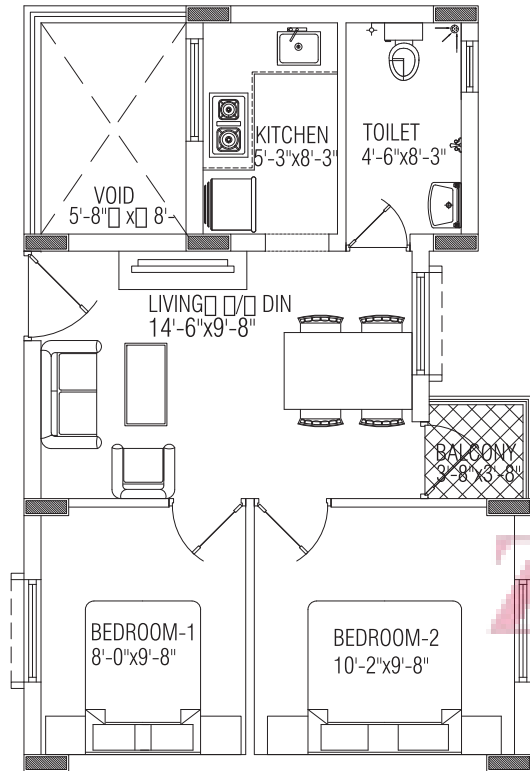
TOWER LAYOUT



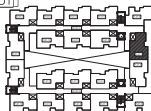
KEY PLAN



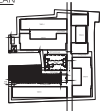
## 2 BHK FLAT (TYPE -2)



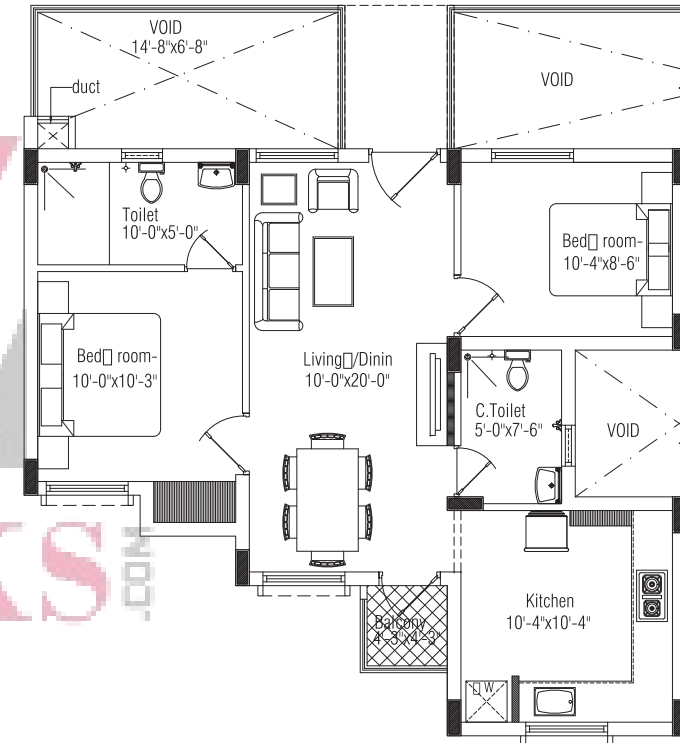
TOWER LAYOUT



KEY PLAN



## 2 BHK FLAT (TYPE-1)



TOWER LAYOUT

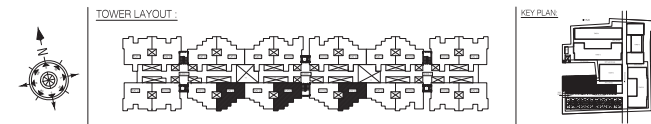
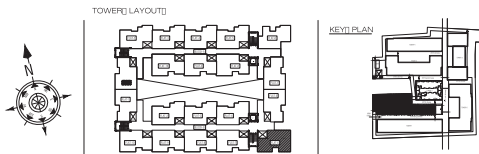
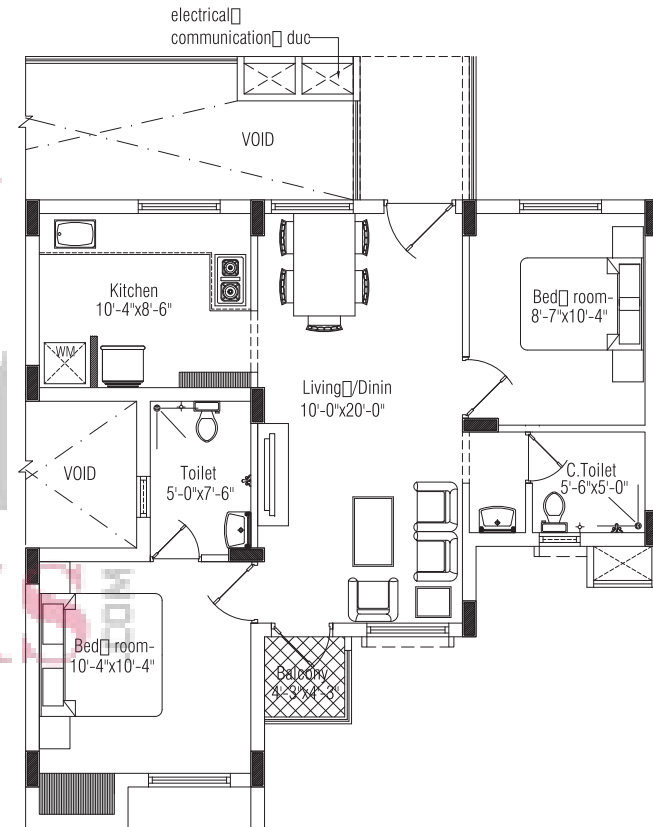
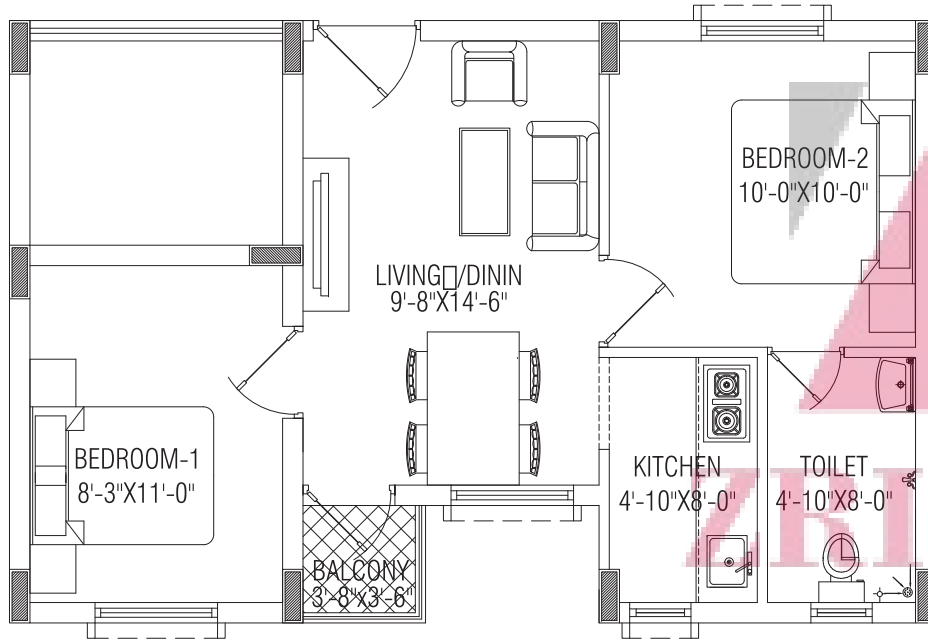


KEY PLAN

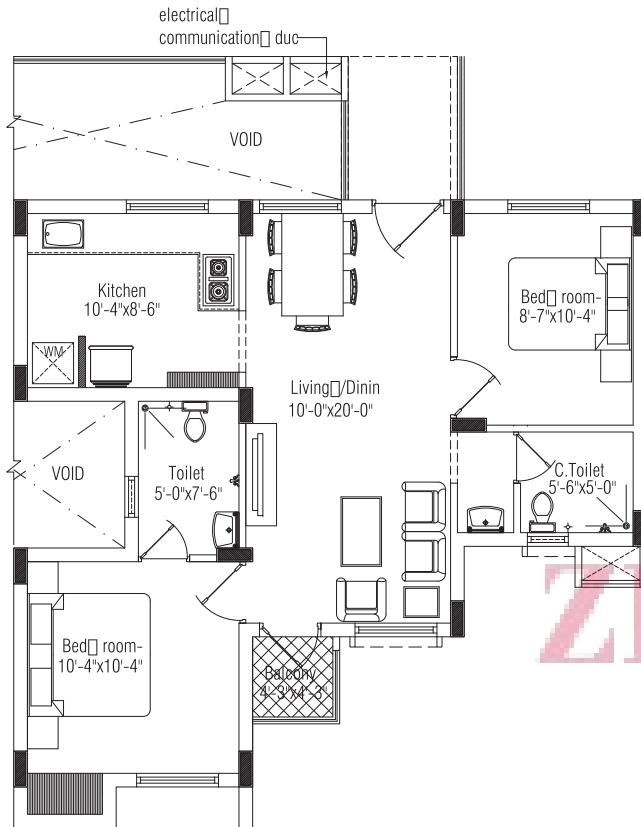


## 2 BHK FLAT (TYPE-1)

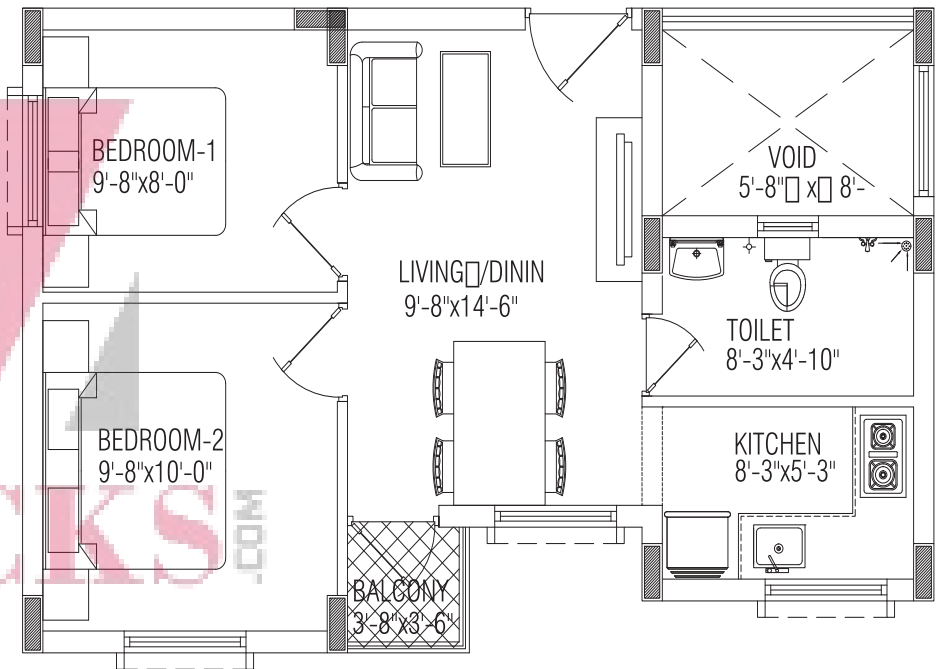
## 2 BHK FLAT (TYPE-1)



## 2 BHK FLAT (TYPE-2)



## 2 BHK FLAT (TYPE-2)



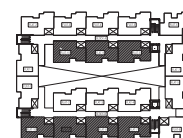
TOWER LAYOUT



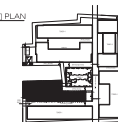
KEY PLAN



TOWER LAYOUT



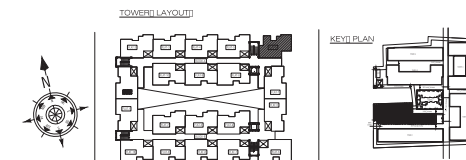
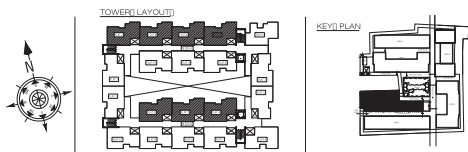
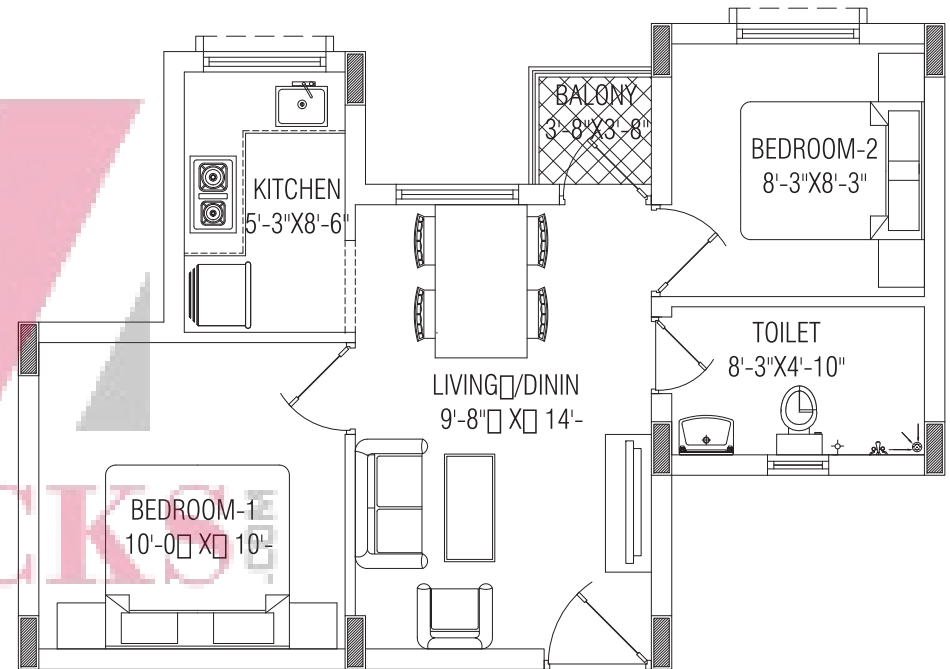
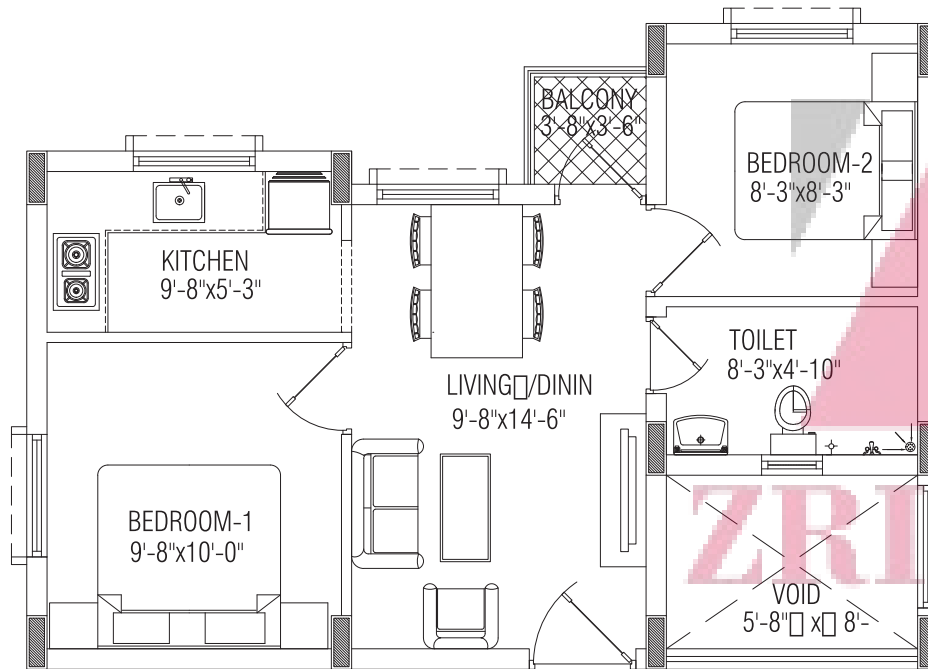
KEY PLAN





## 2 BHK FLAT (TYPE-1)

## 2 BHK FLAT (TYPE-2)





Samekana  
Shriram **ONECITY**  
VALARPURAM - CHENNAI



SHRIRAM SAMEKANA



**Shriram**  
Properties

Homes that live in you

Lakshmi Neela Rite Choice Chamber, 1st Floor, New No.9, Bazullah Road, T. Nagar, Chennai - 600 017  
T: 044 - 4001 4410 | E-mail: onecity@shriramproperties.com | www.shriramproperties.com/onecity

[www.Zricks.com](http://www.Zricks.com)